

MEETING MINUTES

Project	Roosevelt High School	Project No	PPS:ARCH 60117, BA: 13910
Subject	Design Advisory Group (DAG) #7	Meeting Date	11/17/2013
From	Renée Roman, Bassetti	Date	11/29/2013

Attending

Lorne McConachie	Bassetti	Charlene Williams	RHS Principal
Renée Roman	Bassetti	Greg Neuman	PPS OSM
Michael Davis	Bassetti	Julie Ocken	RHS DAG/City of PDX BPS
Kevin Spellmen	Board Accountability Committee		RHS DAG
Joe Purkey	RHS Campus Improvement Committee		
Jim Owens	PPS OSM	Kelsey Green	RHS DAG
Michelle Platter	PPS OSM/Proj Team	Mike Verbout	RHS DAG
Sarah Oaks	PPS OSM/Proj Team	Jason Starkman	RHS DAG
Herman Greene	Cluster Parent	Dennis Phillips	CTE Activist

Discussion:

1. Lorne reviewed examples from similar projects: RHS in Seattle, Tacoma HS, Franklin HS in Seattle, and Mary Gates Hall in Seattle.
2. Michael Davis noted the schemes represent ideas from prior meetings and discussions, he launched into presentations for Schemes E, F, & G. Site plans, sections, and 3-D modeling of massing for each scheme was shown.
 - a. Zoning school for keying discussed and will be pursued in detail during the design development phase. Centralized access was important. Lorne emphasized design theme of providing safe and secure schools and noted there will be flexibility for management options so it can change in the future.
 - b. Lighting at parking lot discussed and it was preferred to locate parking closer to building and reduce the spill over light into the adjacent residential neighborhood. Providing the parking closer to the building was preferred for convenience and safety.
 - c. Question regarding the exterior design of the new portion of school and will the design match the historical school or be modern. Lorne noted that during past discussions there was a preference for modern but there has been no design work of the exterior in this phase. Michelle Platter noted the State Historic Preservation Office states it should complement not replicate.
 - d. Clarification provided on the Commons space. In each scheme the central Commons is as interior space and is not open to the outdoors.
3. Attendees reviewed each scheme in detail and the following are comments from the roaming and discussion portion of the meeting.

Roosevelt High School
Design Advisory Group (DAG) #7
10/17/2013

- a. Noise level between performing arts space and gym was a concern for Scheme F where the spaces were located along the western portion of the main 1921 building. Scheme F was noted as 'unbalanced' as well.
 - b. Four tennis courts were needed for competitions, two were shown on schemes.
 - c. Preference for one full sized basketball court with two half courts.
 - d. Ideas for parking included parking diagonally along N Smith Street, creating a one way vehicular circulation at perimeter of site with diagonal parking where possible.
 - e. It was noted for Scheme G that outdoor storage was needed for each sports team.
 - f. Sped program was shown consolidated in Scheme E, and this was preferred. SPED entrance shown along west side of 1921 building in Scheme E, and this was preferred.
 - g. Parking located at gym and at performing arts wing preferred rather than consolidating all parking together.
 - h. North parking lot could double as basketball court on weekends.
 - i. It was noted that students should not be able to drive through site.
 - j. Administrative office located near main entrance preferred.
4. Enhanced Electives (EE) Discussion
- a. Importance of talking to students discussed and needing flexible spaces noted.
 - b. Clarification requested from PPS on how EE spaces are analyzed with other schools' EE programs; i.e. will RHS's EE programs compliment or compete with Benson or other schools?
 - c. Future viability noted as important for EE spaces.
 - d. Providing exposure to students and not necessarily a career path was desired.
 - e. PPS created a listing for possible EE programs, attendees then voted, with dots, on their preferred EE programs. (See attached.)

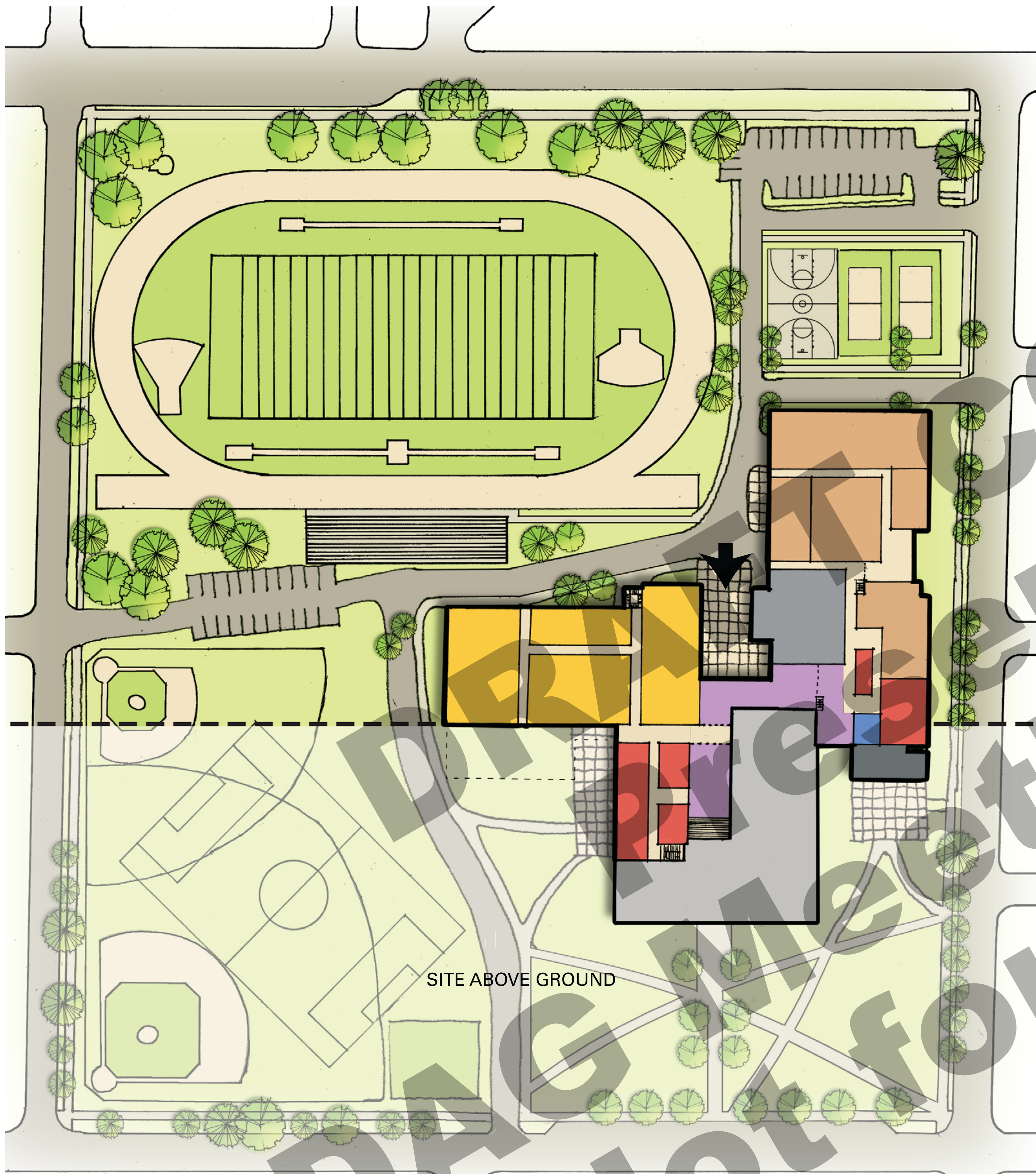
END OF MEETING MINUTES 10/17/13

Next DAG Meeting: 11/19/13

Attachments: Schemes E, F, G and EE Dot Voting Board

Meeting minutes composed by: Renée Roman, Project Manager

Bassetti Architects believes these meeting minutes accurately convey the discussions and decisions that occurred during the meeting. These minutes will become part of the project record unless comments pertaining to the accuracy of these minutes are received from attendees within 5 calendar days of issuance of minutes.



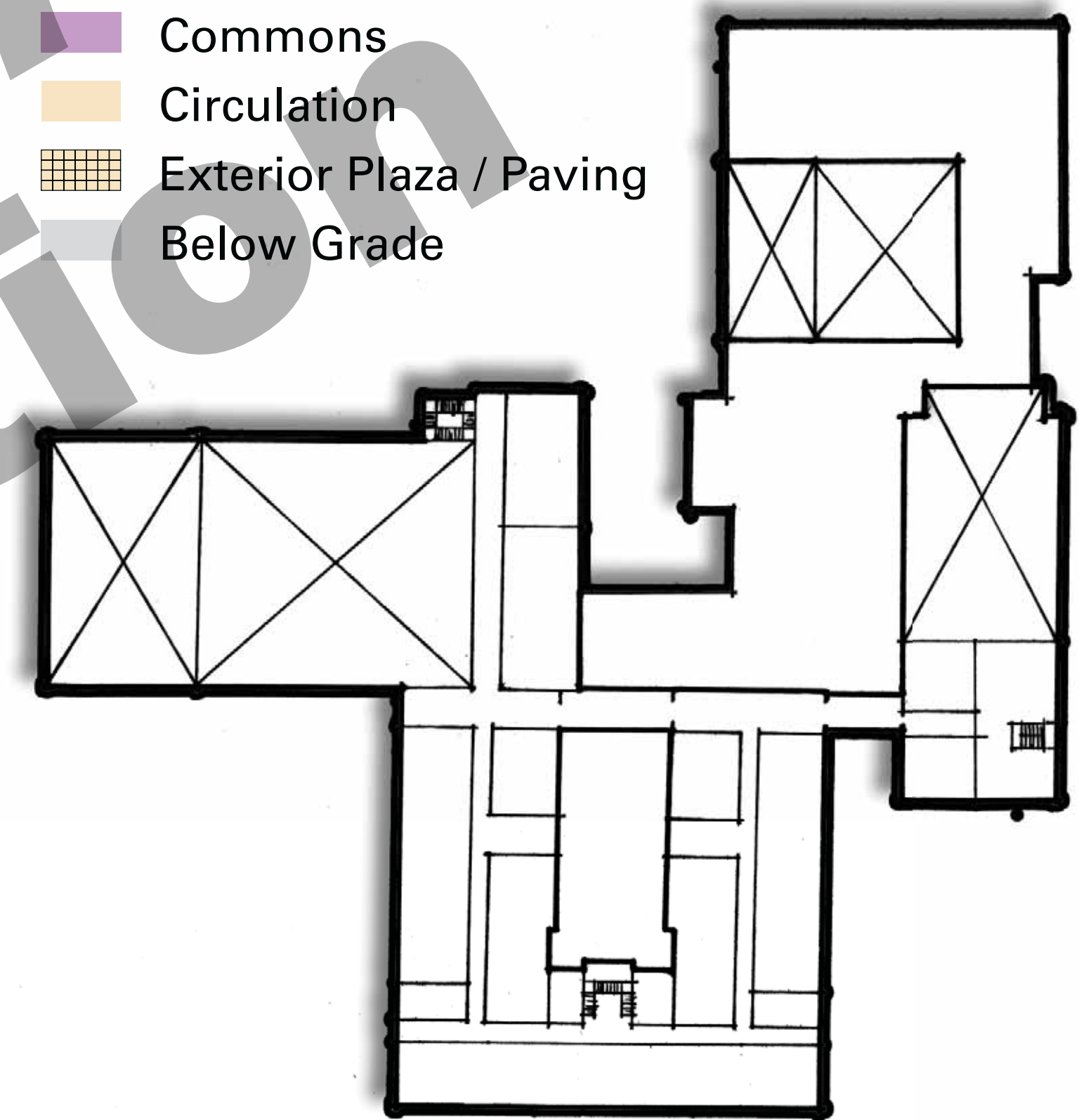
GROUND FLOOR



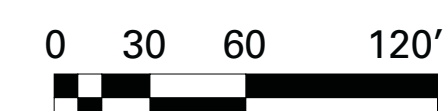
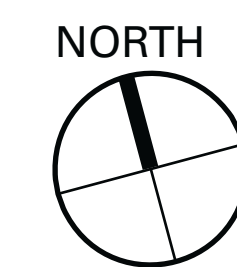
FIRST FLOOR

LEGEND

- General Education
- Special Education (SPED)
- Performing / Visual Arts
- Enhanced Elective
- Media Center / Library
- PE / Athletics
- Future Classroom Addition
- Counseling / Student Services
- Administration / Teacher Planning
- Kitchen / Support / Custodial
- Community / Wrap Around Services
- Commons
- Circulation
- Exterior Plaza / Paving
- Below Grade



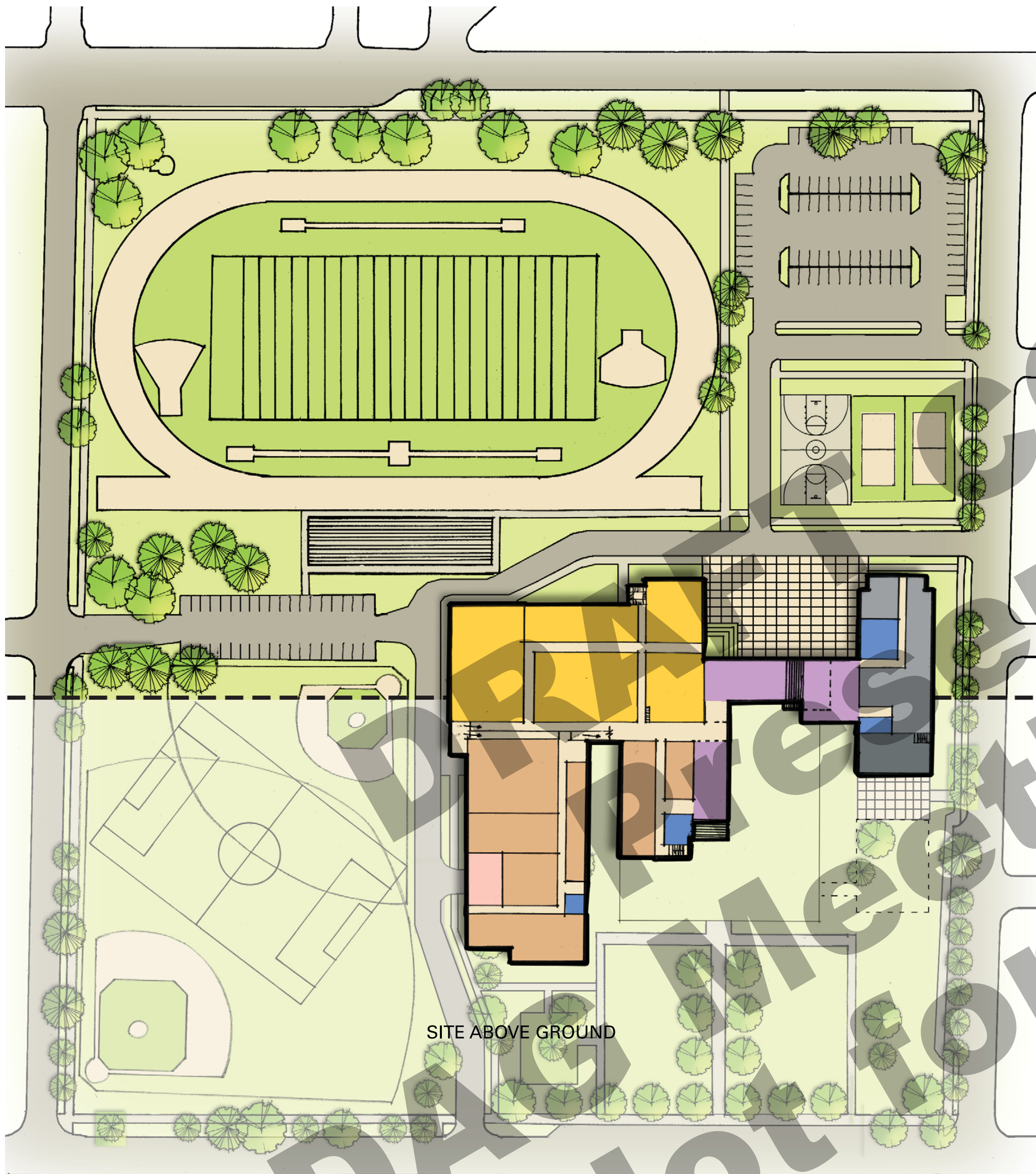
SECOND FLOOR



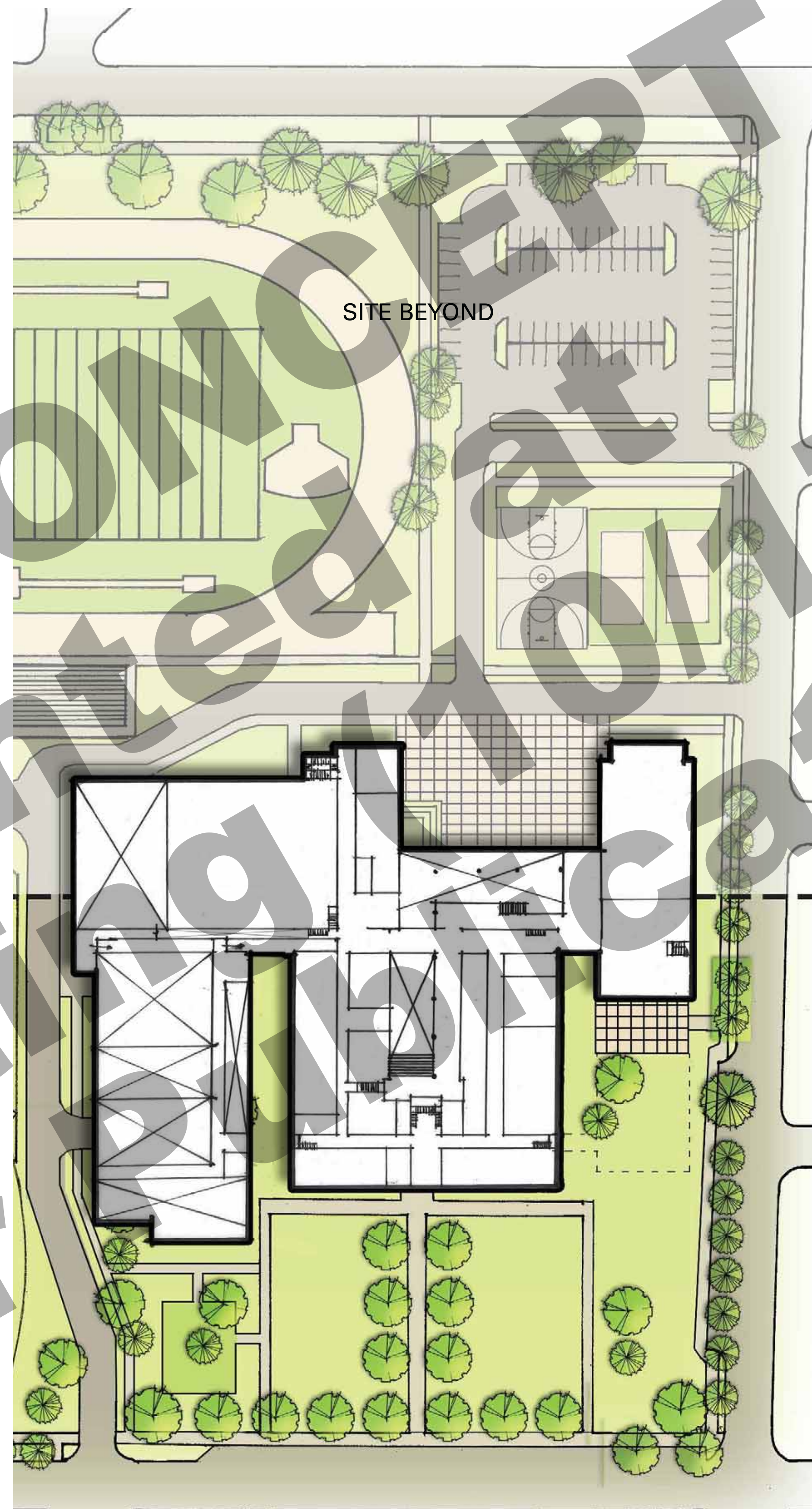
ROOSEVELT HIGH SCHOOL

ORGANIZATIONAL CONCEPT STUDIES - SCHEME E

October 17, 2013



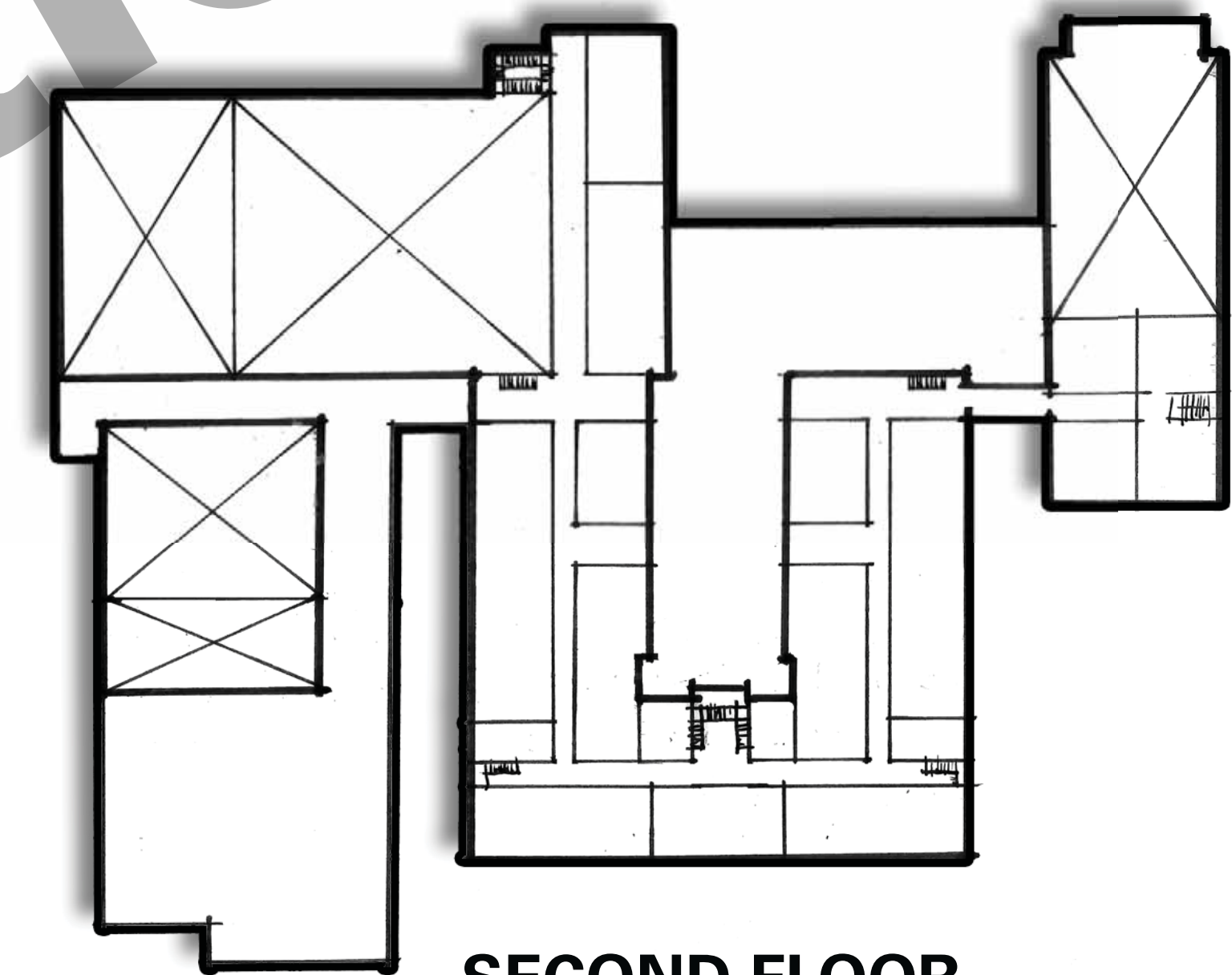
GROUND FLOOR



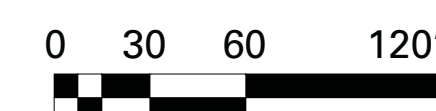
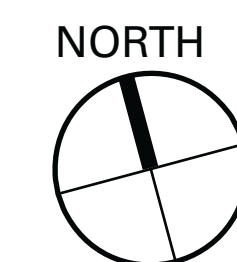
FIRST FLOOR

LEGEND

- General Education
- Special Education (SPED)
- Performing / Visual Arts
- Enhanced Elective
- Media Center / Library
- PE / Athletics
- Future Classroom Addition
- Counseling / Student Services
- Administration / Teacher Planning
- Kitchen / Support / Custodial
- Community / Wrap Around Services
- Commons
- Circulation
- Exterior Plaza / Paving
- Below Grade



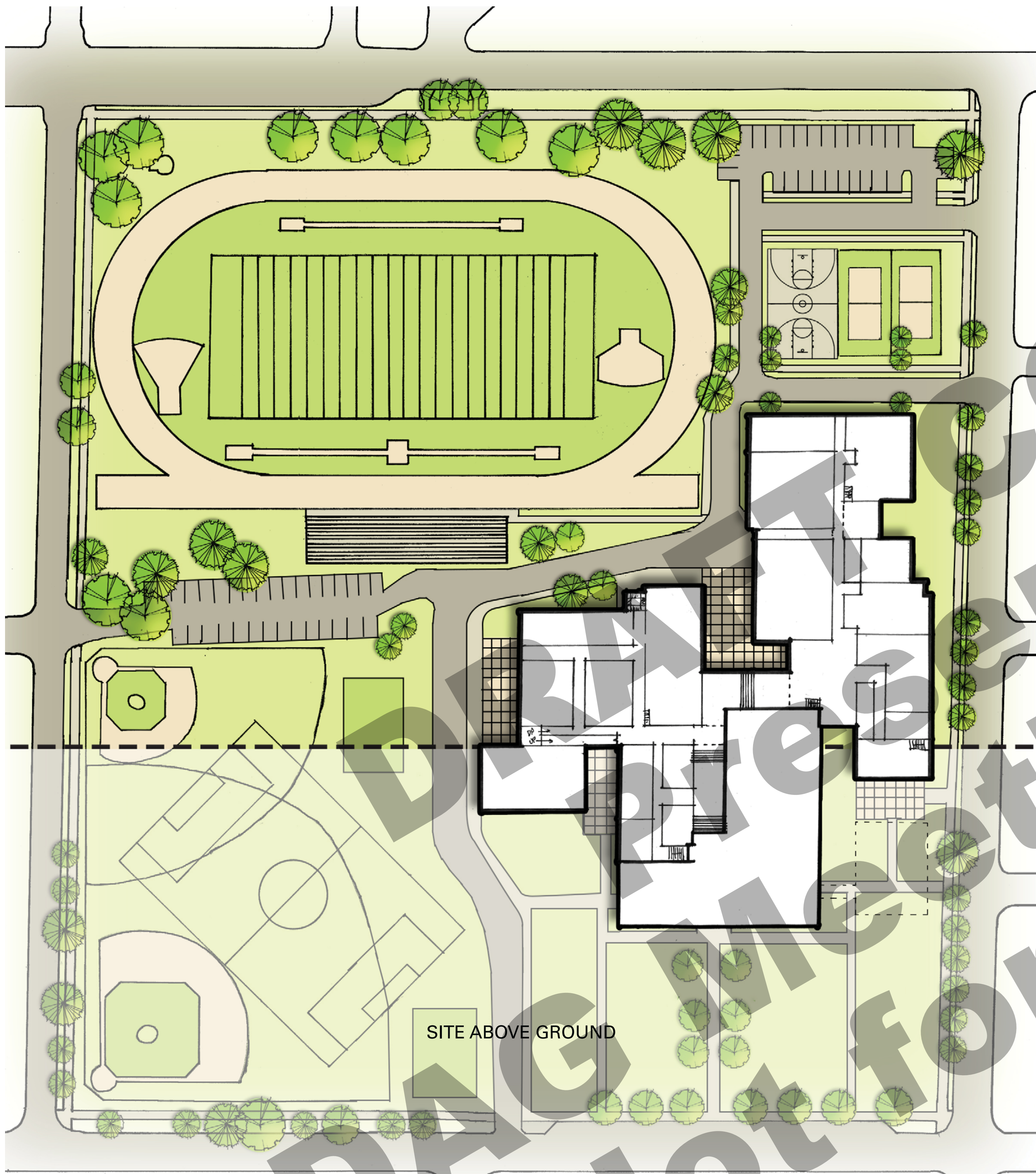
SECOND FLOOR



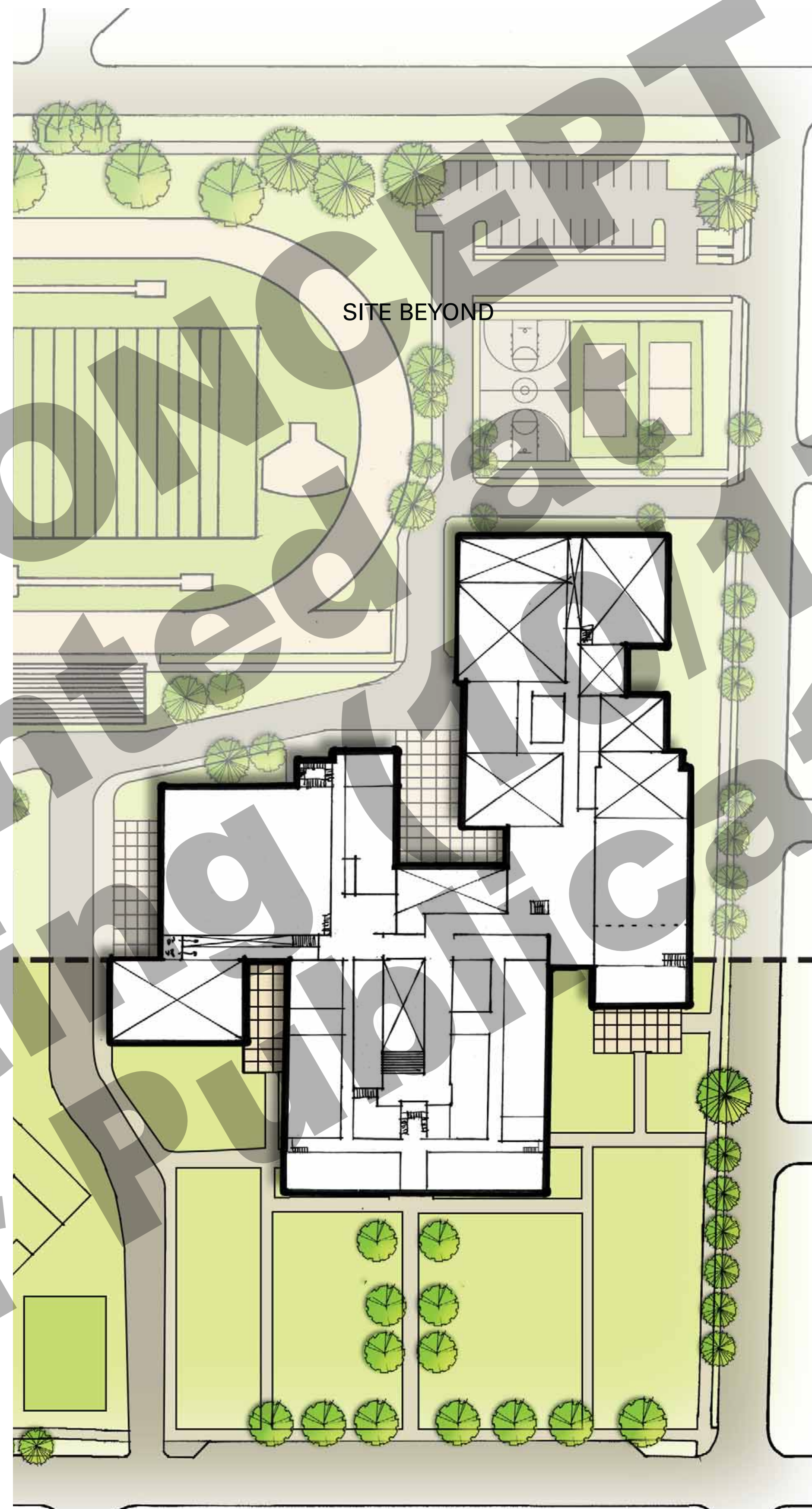
ROOSEVELT HIGH SCHOOL

ORGANIZATIONAL CONCEPT STUDIES - SCHEME F

October 17, 2013



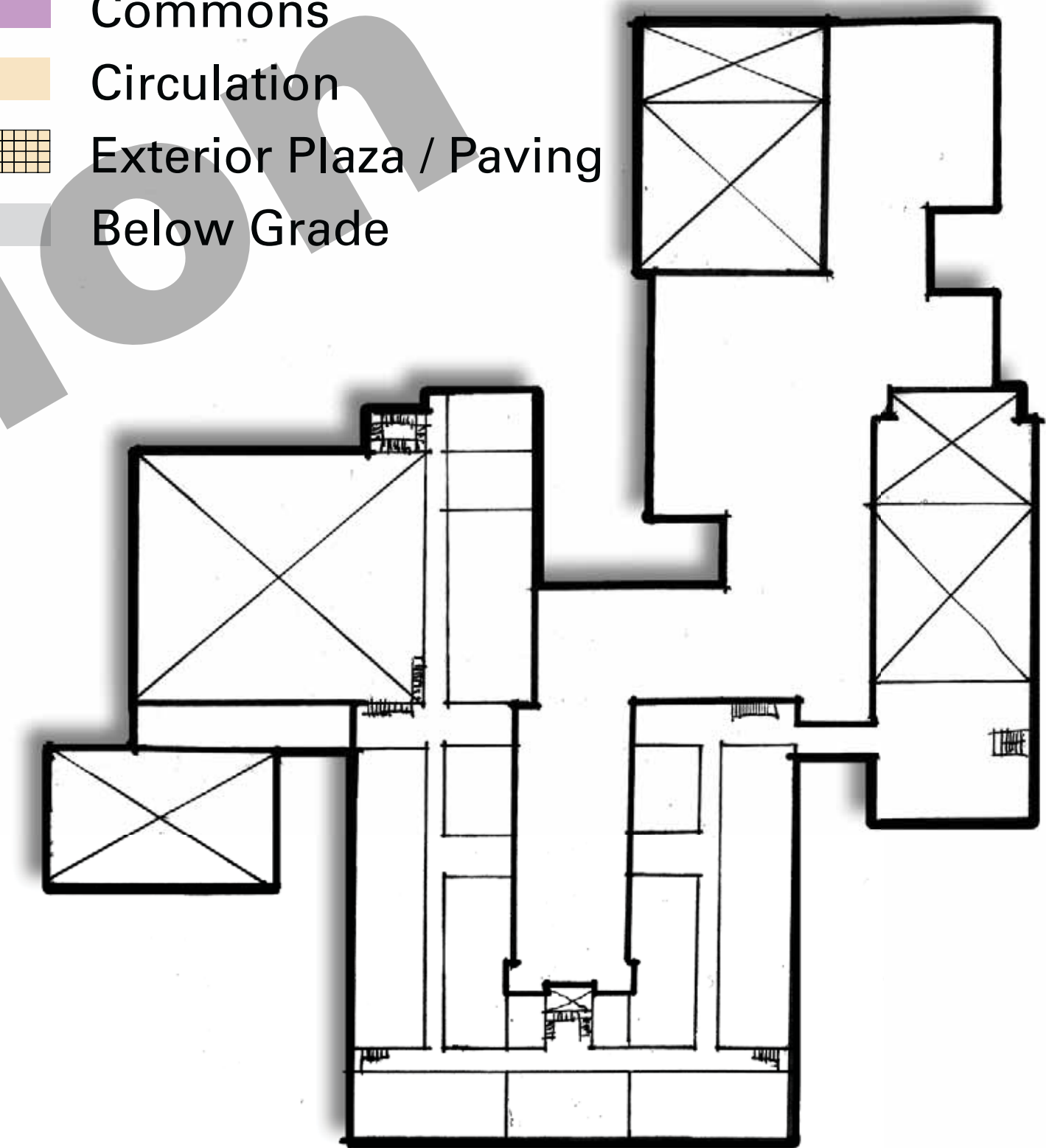
GROUND FLOOR



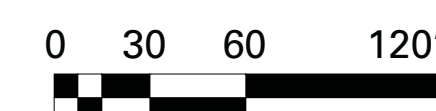
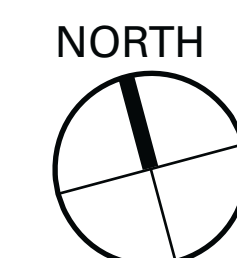
FIRST FLOOR

LEGEND

- General Education
- Special Education (SPED)
- Performing / Visual Arts
- Enhanced Elective
- Media Center / Library
- PE / Athletics
- Future Classroom Addition
- Counseling / Student Services
- Administration / Teacher Planning
- Kitchen / Support / Custodial
- Community / Wrap Around Services
- Commons
- Circulation
- Exterior Plaza / Paving
- Below Grade



SECOND FLOOR



ROOSEVELT HIGH SCHOOL

ORGANIZATIONAL CONCEPT STUDIES - SCHEME G

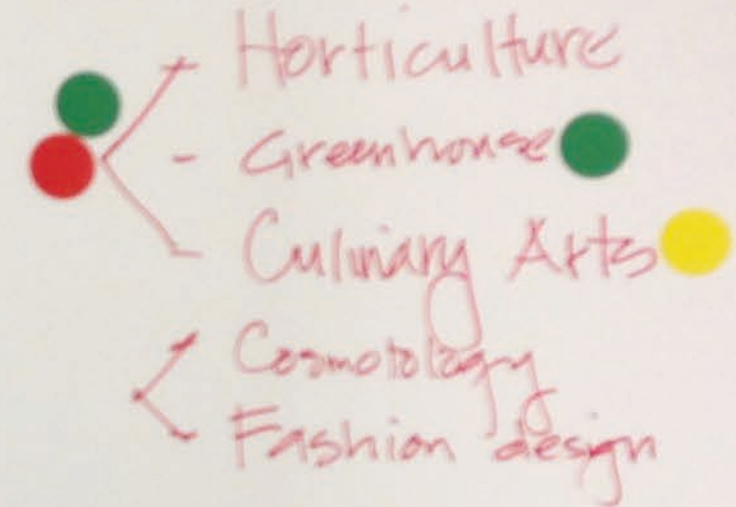
October 17, 2013



Enhanced Elective Opportunities

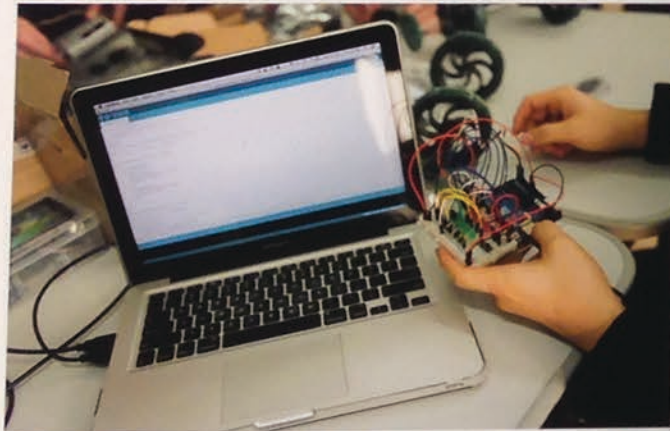
STEM Space

- Computer lab with 3D printer
- Project Display
- Robotics
- Engineering Lab
- Woods/Metals/Welding Lab
- Alternative Energy Lab



Health Sciences

- Sports Medicine
- Health
- Anatomy
- Physiology - Advanced
- Chemistry - Advanced
- Astronomy
- BioTech



- Engines Technology
- Electronics
- Computer Technology
- Software Engineering
- Web and Digital Communications
- Public Speaking
- Writing Lab
- Publishing Lab with computers for graphics and printing
- Dance
- Black Box Theater

Film Video